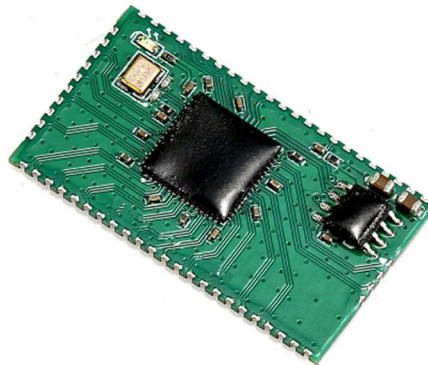


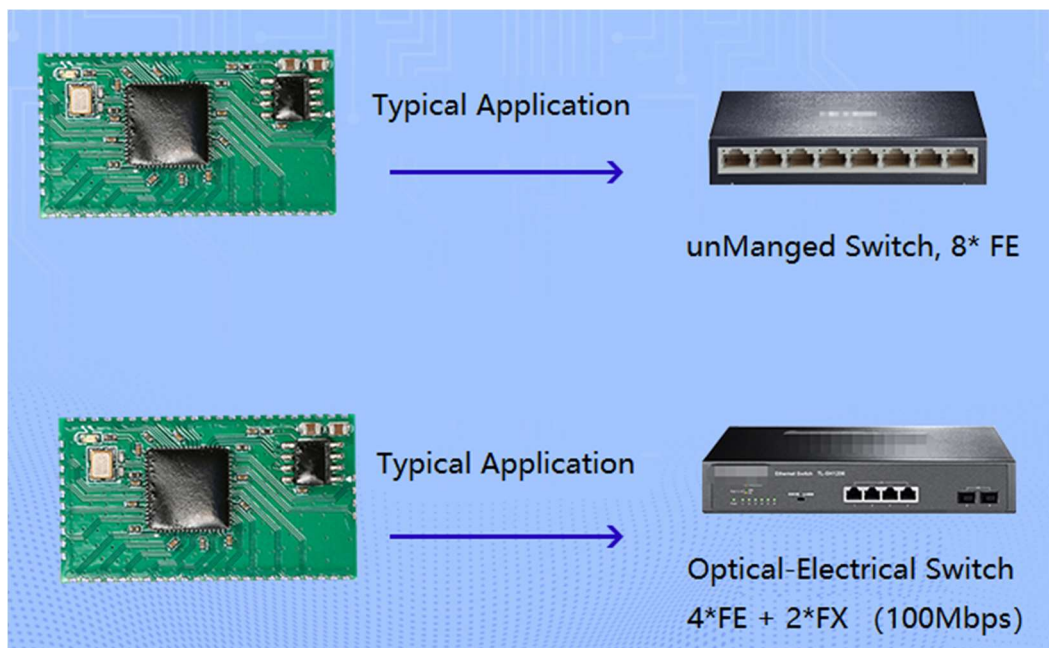
IF08 8 port Ethernet switch, ethernet switch module, industrial temperature range ethernet switch

IF08 is a 100M unmanaged Ethernet switch module, with a maximum support of 8 10/100m Base T/(x) or SFP physical interfaces. It is able for Ethernet port expansion, optical-electrical conversion, intelligent home panel and industrial switch etc. field.

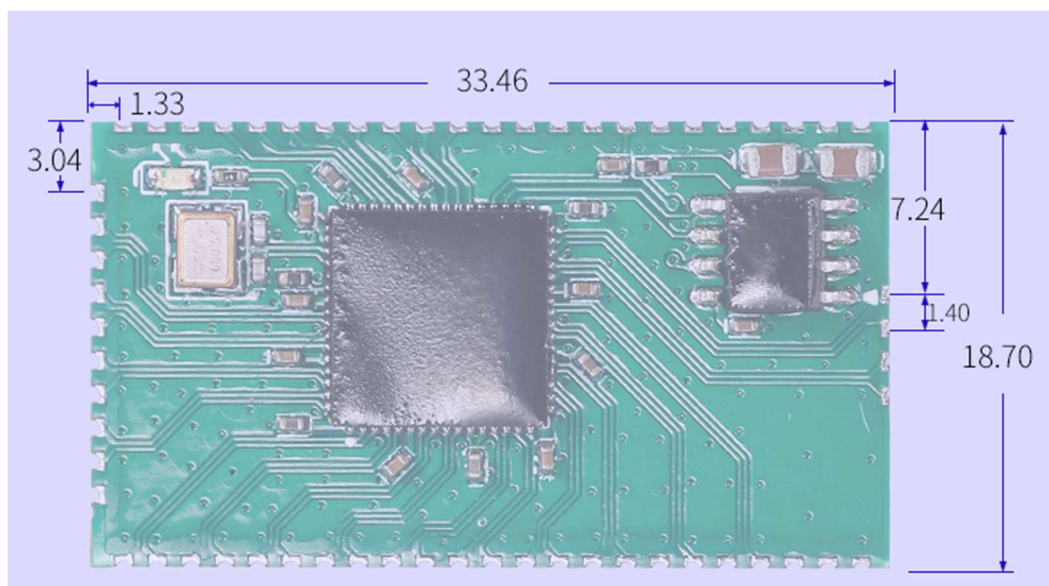
- stamp packaging design, reliable and convenient assembly;
- small size: 33.5X18.7(MM), compact structure, suitable for various board card integration, full load machine power consumption is less than 1.5w;
- industrial temperature devices, temperature range (-40°C~85°C);
- the number of optical port and electrical port can be flexibly configured ;
- customizable software: VLAN configuration, physical port setting;



Applications



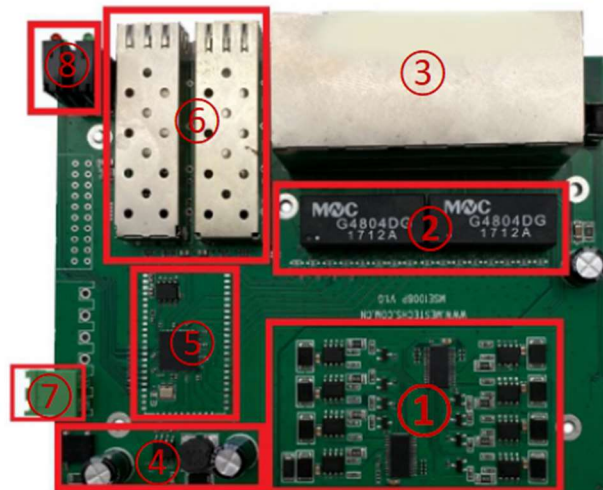
Dimension:(mm)



Test-board

MSE1000-EVBA is 100M unmanaged industrial Ethernet switch test-board for IF08.

- ① PSE power supply circuit
- ② Ethernet network transformer
- ③ Double layer RJ45 (with LED)
- ④ DC/DC power supply circuit
- ⑤ IF08 module
- ⑥ SFP card slot
- ⑦ Power input terminal (DC/12-58V)
- ⑧ LED



Order Information

Product Description
8-port 100M Ethernet switch module
Test-board

Order Code
IF08
MSE1000-EVBA